



Natural Values Report

Report number: 34293

Reference:

Requested For:

Timestamp: 05:36:55 PM Monday 22 September 2008

Threatened Flora: buffers 500m and 5000m

Threatened Fauna: buffers 500m and 5000m

Conservation Significance Flora: buffers 500m and 5000m

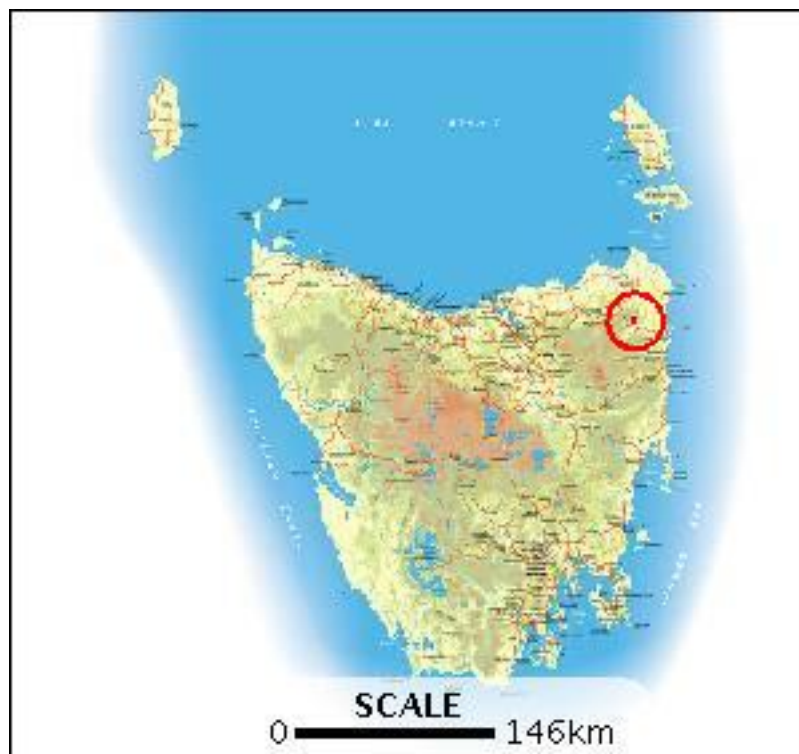
Conservation Significance Fauna: buffers 500m and 5000m

TasVeg: buffer 1000m

Threatened Non-Forest: buffer 1000m

Geoconservation: buffer 1000m

Private Reserves: buffer 1000m



Centroid: GDA94 584944,5435273

1:25000 Map: 5843 BLUE TIER

Property: 2542305 LEHNERS RIDGE ROAD, LOTTAH
TAS 7216

Estimated Geographic Range (EGR) for any particular species is the range in which the species is known, or likely, to occur where there is potential habitat. EGR is based on the best available knowledge at the time the range was developed, including point observations and expert opinion. EGR may change subject to new information. EGR information is not available for all species. The latest EGR should be incorporated into the planning of any development.

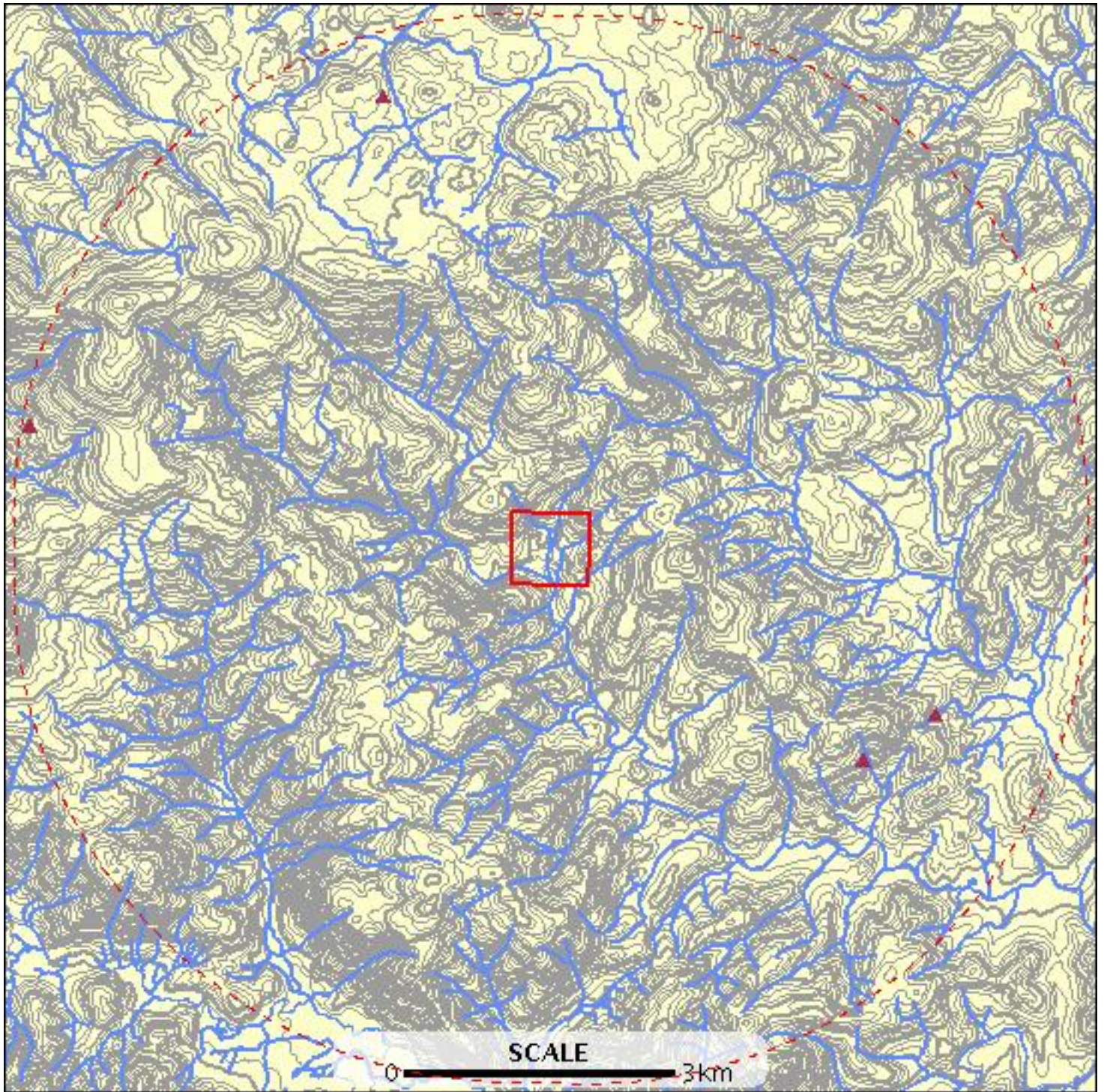
Threatened flora within 500 metres

*** No threatened flora found within 500 metres. ***

Threatened flora within 5000 metres

E: 579454
N: 5440749

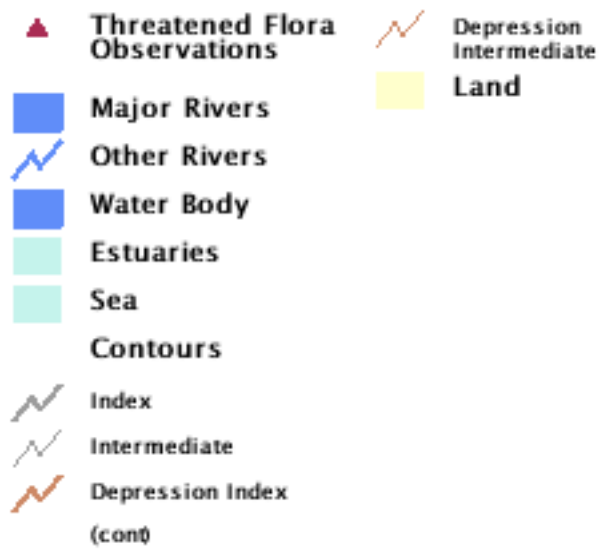
E: 590435
N: 5440749



E: 579454
N: 5429803

E: 590435
N: 5429803

Threatened flora within 5000 metres



Threatened flora within 5000 metres

ID	Species	Common Name	TS PA	EPB CA	Observers	Date	Location (GDA94)
987066	Bunodophoron notatum		e		A. Simson	01-Jan-1875	588085,5433126 +/- 10000m.
929239	Hierochloe rariflora	cane holygrass	r		A. Simson	01-Nov-1876	588085,5433126 +/- 1500m.
263703	Persoonia gunnii var. oblanceolata	lanceleaf geebung	r		A. Simson	09-Mar-1878	579712,5436483 +/- 1000m.
230597	Plantago debilis	shade plantain	r		A. Simson	Apr-1876	588812,5433583 +/- 2000m.
149053	Scleranthus brockiei	mountain knawel	r		K. Johnson	14-Mar-1996?	583262,5439783 +/- 100m.
929404	Senecio squarrosus	leafy fireweed	r		A. Simson	01-Dec-1876	588085,5433126 +/- 1500m.
230610	Senecio velleioides	forest groundsel	r		F E Burbury		588812,5433583 +/- 2000m.

For more information about threatened species, please contact the Manager, Threatened Species Section.

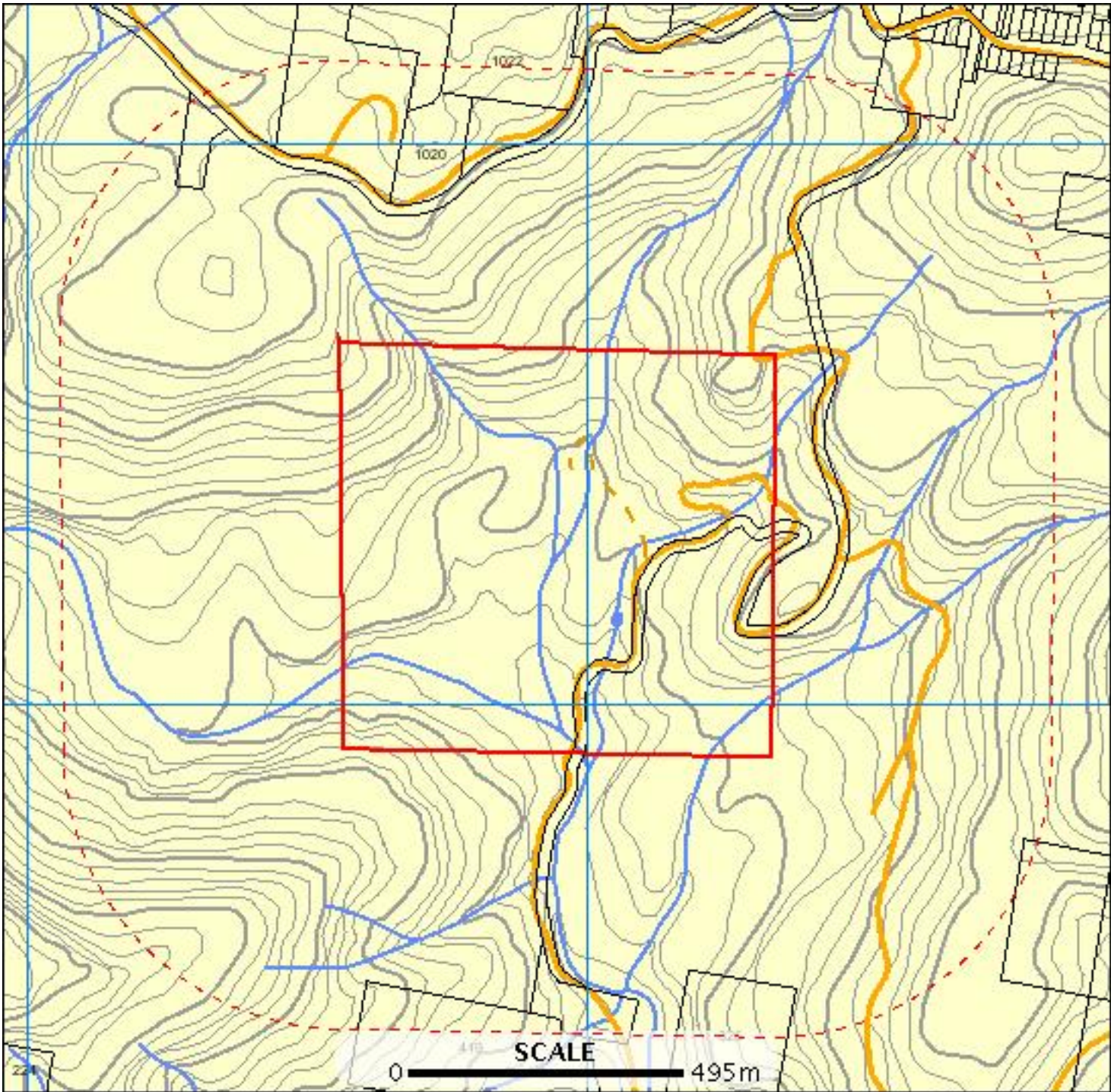
Telephone: (03) 6233 8759

Email: ThreatenedSpecies.Enquiries@dpiw.tas.gov.au

Threatened fauna within 500 metres

E: 583954
N: 5436250

E: 585935
N: 5436250



E: 583954
N: 5434303

E: 585935
N: 5434303

Threatened fauna within 500 metres



Threatened fauna within 500 metres

Threatened fauna within 500 metres (based on Estimated Geographic Range)

Species	Common Name	TS PA	EPB CA	Habitat	Accred St	Date	Boundary
<i>Accipiter novaehollandiae</i>	grey goshawk	e					
<i>Aquila audax</i>	wedge-tailed eagle	pe	PEN				
<i>Haliaeetus leucogaster</i>	white-bellied sea-eagle	v					
<i>Hoplogonus bornemisszai</i>	bornemissza's stag beetle	e					
<i>Hoplogonus simsoni</i>	simson's stag beetle	v					
<i>Litoria raniformis</i>	green and golden frog	v	VU				
<i>Perameles gunnii</i>	eastern barred bandicoot		PVU				
<i>Tasmanipatus barretti</i>	giant velvet worm	r					

For more information about threatened species, please contact the Manager, Threatened Species Section.

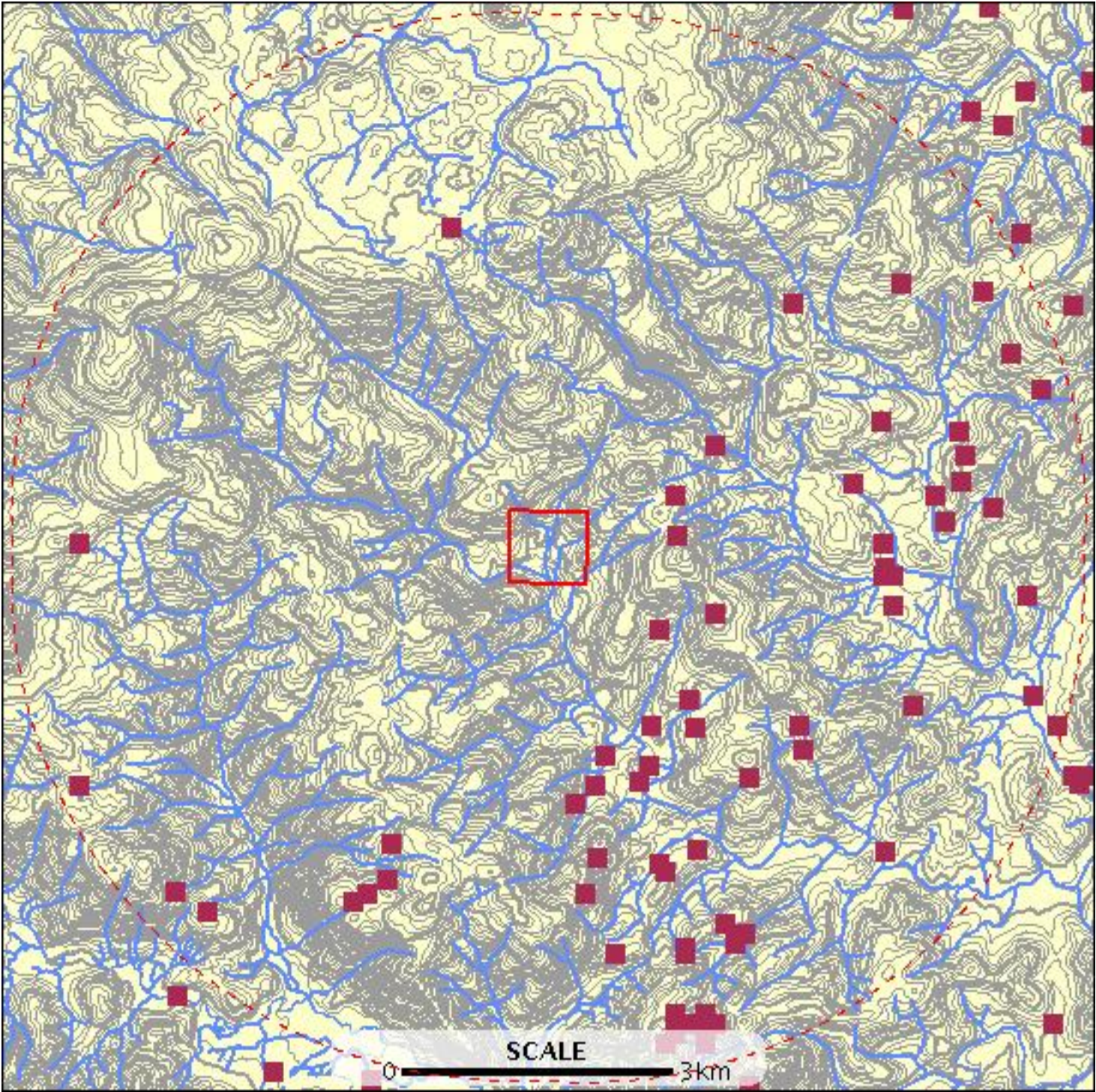
Telephone: (03) 6233 8759

Email: ThreatenedSpecies.Enquiries@dpiw.tas.gov.au

Threatened fauna within 5000 metres

E: 579454
N: 5440749

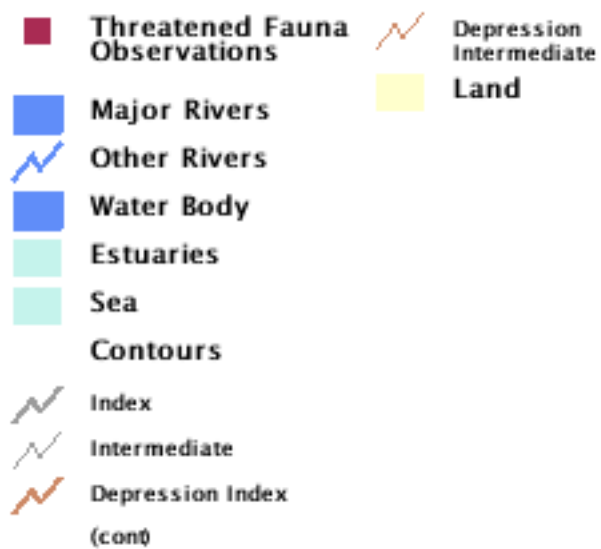
E: 590435
N: 5440749



E: 579454
N: 5429803

E: 590435
N: 5429803

Threatened fauna within 5000 metres



Threatened fauna within 5000 metres

ID	Species	Common Name	TS PA	EPB CA	Observers	Date	Location (GDA94)
878186	Accipiter novaehollandiae	grey goshawk	e		D.Binns	11-Apr-1992?	588612,5433683 +/- 100m.
950073	Aquila audax subsp. fleayi	wedge-tailed eagle	e	EN	W.Mulder	20-Jul-2006	585207,5432702 +/- 10m.
900834	Dasyurus maculatus subsp. maculatus	spotted-tailed quoll	r	VU	G.Hocking	25-May-1985?	586212,5435783 +/- 10000m.
741919	Dasyurus maculatus subsp. maculatus	spotted-tailed quoll	r	VU	G.Hocking	11-Sep-1992	588325,5432222 +/- 1617m.
533630	Hoplogonus bornemisszai	bornemissza's stag beetle	e		K.Richards	1999	589812,5433783 +/- 100m.
352548	Hoplogonus simsoni	simson's stag beetle	v		J.Meggs	01-Jan-1996?	583962,5438483 +/- 100m.
602435	Hoplogonus simsoni	simson's stag beetle	v		J.Meggs	06-Feb-1997	588487,5437908 +/- 100m.
593604	Hoplogonus simsoni	simson's stag beetle	v		Finnigan	22-Jan-1997	588012,5435908 +/- 100m.
593608	Hoplogonus simsoni	simson's stag beetle	v		Bornemissza		583962,5438483 +/- 250m.
593609	Hoplogonus simsoni	simson's stag beetle	v		Vanderschoor		586062,5432083 +/- 100m.
593610	Hoplogonus simsoni	simson's stag beetle	v		Buchhorn	01-Feb-1997	582987,5431708 +/- 200m.
593611	Hoplogonus simsoni	simson's stag beetle	v		Vanderschoor		585962,5433083 +/- 200m.
593649	Hoplogonus simsoni	simson's stag beetle	v		J.Meggs	02-Jun-1998	589587,5437208 +/- 100m.
593650	Hoplogonus simsoni	simson's stag beetle	v		J.Meggs	11-Jun-1998?	587462,5433483 +/- 100m.
593651	Hoplogonus simsoni	simson's stag beetle	v		J.Meggs	04-Mar-1998?	583137,5431783 +/- 100m.
593652	Hoplogonus simsoni	simson's stag beetle	v		J.Meggs	01-Dec-1996?	588337,5435058 +/- 100m.
593656	Hoplogonus simsoni	simson's stag beetle	v		J.Meggs	04-Mar-1998?	583337,5431933 +/- 100m.
593659	Hoplogonus simsoni	simson's stag beetle	v		J.Meggs	03-Jun-1998?	589062,5436433 +/- 100m.
593664	Hoplogonus simsoni	simson's stag beetle	v		J.Meggs	02-Jul-1998?	589587,5437208 +/- 100m.
593712	Hoplogonus simsoni	simson's stag beetle	v		J.Meggs	06-May-1998?	585862,5432908 +/- 100m.
593714	Hoplogonus simsoni	simson's stag beetle	v		Finnigan	30-Nov-1996	588337,5435058 +/- 100m.
593715	Hoplogonus simsoni	simson's stag beetle	v		Finnigan	30-Nov-1996	588837,5435783 +/- 100m.
593716	Hoplogonus simsoni	simson's stag beetle	v		Finnigan	25-Nov-1996	588312,5435308 +/- 100m.
602434	Hoplogonus simsoni	simson's stag beetle	v		J.Meggs	11-Feb-1997	588287,5436533 +/- 100m.
602450	Hoplogonus simsoni	simson's stag beetle	v		J.Meggs	24-Feb-1997	586062,5434433 +/- 100m.
602458	Hoplogonus simsoni	simson's stag beetle	v		J.Meggs	09-Jun-1998?	586362,5433733 +/- 100m.
602483	Hoplogonus simsoni	simson's stag beetle	v		J.Meggs	05-May-1998?	586437,5432233 +/- 100m.
602484	Hoplogonus simsoni	simson's stag beetle	v		J.Meggs	17-Jul-1998?	586612,5434608 +/- 100m.
602485	Hoplogonus simsoni	simson's stag beetle	v		J.Meggs	10-Jun-1998?	586962,5432958 +/- 100m.
602489	Hoplogonus simsoni	simson's stag beetle	v		J.Meggs	11-Jun-1998?	587512,5433233 +/- 100m.
602511	Hoplogonus simsoni	simson's stag beetle	v		J.Meggs	04-Jun-1998?	588937,5435533 +/- 100m.
602513	Hoplogonus simsoni	simson's stag beetle	v		J.Meggs	03-Jun-1998?	589137,5436183 +/- 100m.
602515	Hoplogonus simsoni	simson's stag beetle	v		J.Meggs	27-May-1998?	583362,5432283 +/- 100m.
602516	Hoplogonus simsoni	simson's stag beetle	v		J.Meggs	02-Jul-1998?	589312,5437833 +/- 100m.
602520	Hoplogonus simsoni	simson's stag beetle	v		J.Meggs	03-Jun-1998?	589887,5436858 +/- 100m.
602577	Hoplogonus simsoni	simson's stag beetle	v		Finnigan	30-Nov-1996	589087,5435933 +/- 100m.

Threatened fauna within 5000 metres

ID	Species	Common Name	TS PA	EPB CA	Observers	Date	Location (GDA94)
602578	Hoplogonus simsoni	simson's stag beetle	v		J.Meggs	09-Jun-1998?	585987,5433483 +/-100m.
845957	Hoplogonus simsoni	simson's stag beetle	v		J.Meggs	01-Nov-1992?	588837,5435783 +/-100m.
845958	Hoplogonus simsoni	simson's stag beetle	v		J.Meggs	01-Nov-1992?	589087,5435933 +/-100m.
849521	Hoplogonus simsoni	simson's stag beetle	v		D.Cowrie	01-Jan-1972?	588412,5434683 +/-100m.
858003	Hoplogonus simsoni	simson's stag beetle	v		D.Cowrie	01-Jan-1972?	585512,5433183 +/-100m.
858004	Hoplogonus simsoni	simson's stag beetle	v		D.Cowrie	01-Jan-1972?	586612,5436283 +/-100m.
602547	Hoplogonus simsoni	simson's stag beetle	v		J.Meggs	07-May-1998?	585437,5432158 +/-100m.
602487	Hoplogonus simsoni	simson's stag beetle	v		J.Meggs	02-Jun-1998	589312,5437833 +/-100m.
593605	Hoplogonus simsoni	simson's stag beetle	v		J.Meggs	05-May-1997	589762,5434783 +/-100m.
602453	Hoplogonus simsoni	simson's stag beetle	v		J.Meggs	06-May-1998?	586112,5432008 +/-100m.
360736	Hoplogonus simsoni	simson's stag beetle	v		Unknown	14-Nov-1996?	588412,5434983 +/-100m.
602518	Hoplogonus simsoni	simson's stag beetle	v		J.Meggs	04-Jun-1998?	589412,5435658 +/-100m.
602451	Hoplogonus simsoni	simson's stag beetle	v		Finnigan	27-Nov-1996	586237,5435383 +/-100m.
533978	Hoplogonus simsoni	simson's stag beetle	v		K.Richards	1999	590062,5433483 +/-100m.
602525	Hoplogonus simsoni	simson's stag beetle	v		J.Meggs	01-Jun-1998?	585312,5431783 +/-100m.
602550	Hoplogonus simsoni	simson's stag beetle	v		J.Meggs	02-Jun-1998?	585612,5431183 +/-100m.
602463	Hoplogonus simsoni	simson's stag beetle	v		J.Meggs	09-Jun-1998?	586412,5433458 +/-100m.
602486	Hoplogonus simsoni	simson's stag beetle	v		J.Meggs	16-Jul-1998?	587412,5437708 +/-100m.
524321	Hoplogonus simsoni	simson's stag beetle	v		K.Richards	1999	589812,5433783 +/-100m.
749164	Perameles gunnii	eastern barred bandicoot		PVU	G.Hocking	16-Apr-1993	581206,5431806 +/-509m.
749160	Perameles gunnii	eastern barred bandicoot		PVU	G.Hocking	11-Sep-1992	580227,5435294 +/-736m.
741889	Perameles gunnii	eastern barred bandicoot		PVU	G.Hocking	08-Sep-1986	581531,5431600 +/-886m.
749213	Sarcophilus harrisii	tasmanian devil	e	VU	G.Hocking	26-Jan-1993	586328,5431243 +/-305m.
741864	Sarcophilus harrisii	tasmanian devil	e	VU	G.Hocking	26-May-1986	580243,5432880 +/-100m.
524038	Tasmanipatus barretti	giant velvet worm	r		d.Horner	1998	586212,5430583 +/-100m.
845896	Tasmanipatus barretti	giant velvet worm	r		R.Mesibov		586312,5431183 +/-100m.
533736	Tasmanipatus barretti	giant velvet worm	r		d.Horner	1998	586512,5430483 +/-100m.
533738	Tasmanipatus barretti	giant velvet worm	r		d.Horner	1998	586512,5430583 +/-100m.
845891	Tasmanipatus barretti	giant velvet worm	r		R.Mesibov	23-Oct-1986?	585412,5432883 +/-100m.
845894	Tasmanipatus barretti	giant velvet worm	r		R.Mesibov		586212,5430383 +/-100m.
845916	Tasmanipatus barretti	giant velvet worm	r		R.Mesibov		586512,5430383 +/-100m.
845917	Tasmanipatus barretti	giant velvet worm	r		R.Mesibov		586712,5431483 +/-100m.
845919	Tasmanipatus barretti	giant velvet worm	r		R.Mesibov		586912,5431383 +/-100m.
854520	Tasmanipatus barretti	giant velvet worm	r		R.Mesibov		586112,5430283 +/-100m.
854523	Tasmanipatus barretti	giant velvet worm	r		R.Mesibov		586412,5430483 +/-100m.
854571	Tasmanipatus barretti	giant velvet worm	r		R.Mesibov	25-Aug-1983?	588312,5434983 +/-100m.

Threatened fauna within 5000 metres

ID	Species	Common Name	TS PA	EPB CA	Observers	Date	Location (GDA94)
854572	Tasmanipatus barretti	giant velvet worm	r		R.Mesibov	26-Aug-1983?	588312,5434983 +/- 100m.
533735	Tasmanipatus barretti	giant velvet worm	r		d.Horner	1998	586512,5430283 +/- 100m.
854541	Tasmanipatus barretti	giant velvet worm	r		R.Mesibov		586812,5431283 +/- 100m.
524065	Tasmanipatus barretti	giant velvet worm	r		d.Horner	1998	586612,5430483 +/- 100m.

Threatened fauna within 5000 metres (based on Estimated Geographic Range)

Species	Common Name	TS PA	EPB CA	Habitat	Accred St	Date	Boundary
Accipiter novaehollandiae	grey goshawk	e					
Aquila audax	wedge-tailed eagle	pe	PEN				
Astacopsis gouldi	giant freshwater crayfish	v	VU				
Haliaeetus leucogaster	white-bellied sea-eagle	v					
Hoplogonus bornemisszai	bornemissza's stag beetle	e					
Hoplogonus simsoni	simson's stag beetle	v					
Hoplogonus vanderschoori	vanderschoor's stag beetle	v					
Litoria raniformis	green and golden frog	v	VU				
Perameles gunnii	eastern barred bandicoot		PVU				
Prototroctes maraena	australian grayling	v	VU				
Tasmanipatus barretti	giant velvet worm	r					

For more information about threatened species, please contact the Manager, Threatened Species Section.

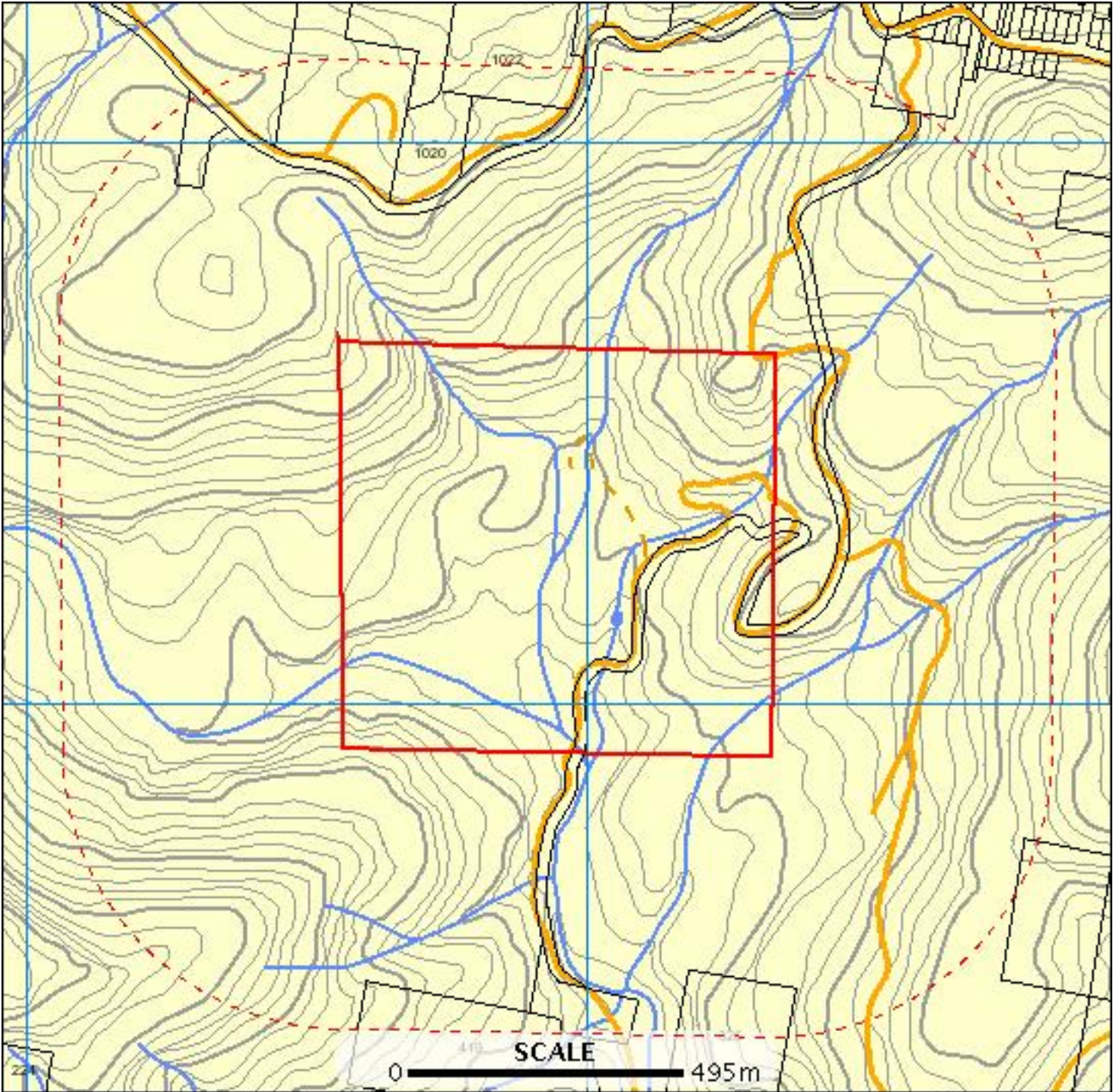
Telephone: (03) 6233 8759

Email: ThreatenedSpecies.Enquiries@dpiw.tas.gov.au

Non-threatened flora of conservation significance within 500 m

E: 583954
N: 5436250

E: 585935
N: 5436250



E: 583954
N: 5434303

E: 585935
N: 5434303

Non-threatened flora of conservation significance within 500 m



Non-threatened flora of conservation significance within 500 m

ID	Species	Common Name	Observers	Date	Location	End	Pri	Sci	RFA	Bio	Res
943729	Craspedia glauca	common billybuttons	K.Radford and A.Purves	16-Jan-2003	585202,5434842 +/- 2000m.	e					

For more information about flora and fauna species, please contact the Manager, Biodiversity Conservation Branch.

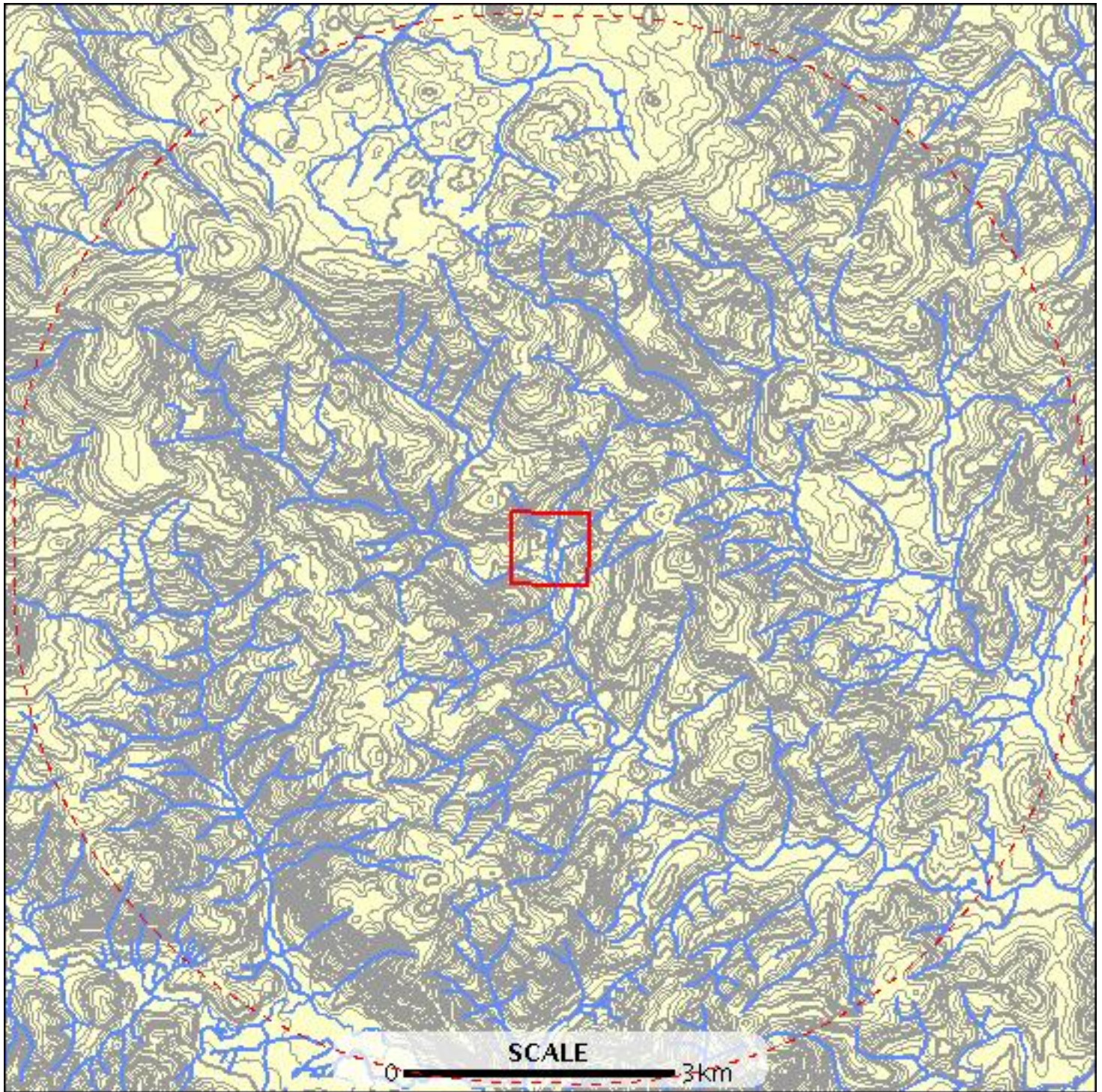
Telephone: (03) 6233 6556

Email: NatureConservation.Enquiries@dpiw.tas.gov.au

Non-threatened flora of conservation significance within 5000 m

E: 579454
N: 5440749

E: 590435
N: 5440749



E: 579454
N: 5429803

E: 590435
N: 5429803

Non-threatened flora of conservation significance within 5000 m



Non-threatened flora of conservation significance within 5000 m

ID	Species	Common Name	Observers	Date	Location	End	Pri	Sci	RFA	Bio	Res
929077	Acacia mucronata subsp. mucronata	erect caterpillar wattle	A.Simson	04-Apr-1878	585224,5436692 +/- 2000m.	e					
928878	Acacia mucronata subsp. mucronata	erect caterpillar wattle	A.Simson	23-Feb-1878	586621,5436676 +/- 2000m.	e					
262957	Aristotelia peduncularis	heartberry	A.Simson	Dec-1875	588112,5435283 +/- 1000m.	e					
264002	Aristotelia peduncularis	heartberry	A.Simson	30-Nov-1878	585512,5436483 +/- 1000m.	e					
79292	Aristotelia peduncularis	heartberry	D.Ziegeler	18-Nov-1998?	588212,5437483 +/- 100m.	e					
263897	Astelia alpina var. alpina	pineapple grass	A.Simson	1877	583912,5438683 +/- 1000m.	e					
508187	Bedfordia salicina	tasmanian blanketleaf	J.Kirkpatrick	Jun-1986	589912,5432983 +/- 100m.	e					
764334	Bedfordia salicina	tasmanian blanketleaf	A.Buchanan	03-Jul-1992?	580862,5431916 +/- 615m.	e					
773733	Bedfordia salicina	tasmanian blanketleaf	A.Buchanan	03-Jul-1992?	587262,5430644 +/- 2244m.	e					
801835	Bedfordia salicina	tasmanian blanketleaf	Unknown	14-Jan-1982?	581112,5432183 +/- 1000m.	e					
262958	Billardiera longiflora	purple appleberry	A.Simson	06-Dec-1878	588112,5435283 +/- 1000m.	e					
764335	Billardiera longiflora	purple appleberry	A.Buchanan	03-Jul-1992?	580862,5431916 +/- 615m.	e					
262959	Billardiera longiflora	purple appleberry	A.Simson	Dec-1875	588112,5435283 +/- 1000m.	e					
517498	Billardiera longiflora var. alpina	alpine purple apple-berry	J.Kirkpatrick	Jun-1986	589912,5432983 +/- 100m.	e					
929393	Carex appressa var. virgata	longleaf tall sedge	A.Simson	01-Dec-1876	585224,5436692 +/- 2000m.	t					
242228	Chionogentias gunniana	gunns forestgentian	A Simson		580512,5437583 +/- -9999m.	e					
943729	Craspedia glauca	common billybuttons	K.Radford and A.Purves	16-Jan-2003	585202,5434842 +/- 2000m.	e					
14812	Cyathodes glauca	purple cheeseberry	M.Wapstra	26-Mar-1996?	584562,5439983 +/- 100m.	e					
148911	Cyathodes glauca	purple cheeseberry	K.Johnson	14-Mar-1996?	582862,5440133 +/- 100m.	e					
148681	Cyathodes glauca	purple cheeseberry	K.Johnson	13-Mar-1996?	584512,5439933 +/- 100m.	e					
14355	Cyathodes glauca	purple cheeseberry	M.Wapstra	26-Mar-1996?	583962,5438483 +/- 100m.	e					
409680	Cyathodes parvifolia	pink mountain berry	J.Kirkpatrick	1984	584412,5438783 +/- 100m.	e					
149023	Cyathodes parvifolia	pink mountain berry	K.Johnson	14-Mar-1996?	583262,5439783 +/- 100m.	e					
241772	Cyathodes parvifolia	pink mountain berry	A.Buchanan	04-Jun-1992	579712,5435383 +/- 100m.	e					
148723	Cyathodes straminea	spreading cheeseberry	K.Johnson	13-Mar-1996?	584212,5440333 +/- 100m.	e					
149024	Danthonia dimidiata	half-formed wallaby-grass	K.Johnson	14-Mar-1996?	583262,5439783 +/- 100m.	e					
263680	Erigeron pappocromus	violet mountaindaisy	A.Simson	05-Feb-1877	579712,5436483 +/- 1000m.	e					
31645	Eucalyptus amygdalina	black peppermint	Dof Forestry Tasmania	01-Feb-1974?	590226,5434522 +/- 100m.	e					
514845	Eucalyptus delegatensis subsp. tasmaniensis	gumtopped stringybark	J.Kirkpatrick	Jun-1986	587612,5438383 +/- 100m.	e					
514875	Eucalyptus delegatensis subsp. tasmaniensis	gumtopped stringybark	J.Kirkpatrick	Jun-1986	588812,5437983 +/- 100m.	e					
514866	Eucalyptus delegatensis subsp. tasmaniensis	gumtopped stringybark	J.Kirkpatrick	Jun-1986	588312,5437983 +/- 100m.	e					
929872	Eucalyptus subcrenulata	alpine yellow gum	B.Potts	27-Oct-2003	582429,5436724 +/- 2000m.	e					

Non-threatened flora of conservation significance within 5000 m

ID	Species	Common Name	Observers	Date	Location	End	Pri	Sci	RFA	Bio	Res
929873	Eucalyptus subcrenulata	alpine yellow gum	B.Potts	27-Oct-2003	582429,5436724 +/- 2000m.	e					
929871	Eucalyptus subcrenulata	alpine yellow gum	B.Potts	27-Oct-2003	582429,5436724 +/- 2000m.	e					
929870	Eucalyptus subcrenulata	alpine yellow gum	B.Potts	27-Oct-2003	582429,5436724 +/- 2000m.	e					
929874	Eucalyptus subcrenulata	alpine yellow gum	B.Potts	27-Oct-2003	582429,5436724 +/- 2000m.	e					
929868	Eucalyptus subcrenulata	alpine yellow gum	B.Potts	27-Oct-2003	582429,5436724 +/- 2000m.	e					
929869	Eucalyptus subcrenulata	alpine yellow gum	B.Potts	27-Oct-2003	582429,5436724 +/- 2000m.	e					
148782	Gaultheria hispida	copperleaf snowberry	K.Johnson	13-Mar-1996?	584512,5440583 +/- 100m.	e					
928791	Gaultheria hispida	copperleaf snowberry	A.Simson	30-Nov-1878	585224,5436692 +/- 2000m.	e					
148922	Gaultheria hispida	copperleaf snowberry	K.Johnson	13-Mar-1996?	584312,5440583 +/- 100m.	e					
929237	Gaultheria hispida	copperleaf snowberry	A.Simson	01-Nov-1876	585224,5436692 +/- 2000m.	e					
524425	Gaultheria hispida	copperleaf snowberry	J.Kirkpatrick	Jun-1986	584912,5437583 +/- 100m.	e					
262475	Gleichenia alpina	alpine coralfern	A.Simson	Aug-1876	579712,5436483 +/- 1000m.	t					
148844	Gleichenia alpina	alpine coralfern	K.Johnson	13-Mar-1996?	584212,5440433 +/- 100m.	t					
148895	Gleichenia alpina	alpine coralfern	K.Johnson	13-Mar-1996?	584212,5440333 +/- 100m.	t					
508191	Lomatia tinctoria	guitarplant	J.Kirkpatrick	Jun-1986	589912,5432983 +/- 100m.	e					
773765	Lomatia tinctoria	guitarplant	A.Buchanan	03-Jul-1992?	587262,5430644 +/- 2244m.	e					
764308	Lomatia tinctoria	guitarplant	A.Buchanan	03-Jul-1992?	584928,5429941 +/- 468m.	e					
148846	Olearia obcordata	heartleaf daisybush	K.Johnson	13-Mar-1996?	584212,5440433 +/- 100m.	e					
148898	Olearia obcordata	heartleaf daisybush	K.Johnson	13-Mar-1996?	584212,5440333 +/- 100m.	e					
262481	Olearia persoonioides	geebung daisybush	A.Simson	Apr-1876	579712,5436483 +/- 1000m.	e					
263702	Olearia persoonioides	geebung daisybush	A.Simson	28-Jan-1878	579712,5436483 +/- 1000m.	e					
262494	Olearia persoonioides	geebung daisybush	A.Simson	01-Feb-1878	579712,5436483 +/- 1000m.	e					
148804	Olearia persoonioides	geebung daisybush	K.Johnson	13-Mar-1996?	584512,5440583 +/- 100m.	e					
12917	Olearia persoonioides	geebung daisybush	M.Wapstra	26-Mar-1996?	584562,5439983 +/- 100m.	e					
263783	Oreomyrrhis sessiliflora	carrotly caraway	A.Simson	05-Feb-1877	581312,5435383 +/- 1000m.	e					
409610	Ozothamnus hookeri	scaly everlastingbush	J.Kirkpatrick	1984	584512,5439883 +/- 100m.	e					
929347	Ozothamnus hookeri	scaly everlastingbush	A.Simson	01-Feb-1878	581012,5434890 +/- 2000m.	e					
411848	Ozothamnus hookeri	scaly everlastingbush	J.Kirkpatrick	1984	585012,5439183 +/- 100m.	e					
411796	Ozothamnus hookeri	scaly everlastingbush	J.Kirkpatrick	1984	584312,5439683 +/- 100m.	e					
148718	Ozothamnus hookeri	scaly everlastingbush	K.Johnson	13-Mar-1996?	584362,5440083 +/- 100m.	e					
148847	Ozothamnus hookeri	scaly everlastingbush	K.Johnson	13-Mar-1996?	584212,5440433 +/- 100m.	e					
148916	Ozothamnus hookeri	scaly everlastingbush	K.Johnson	13-Mar-1996?	584212,5440333 +/- 100m.	e					
14838	Ozothamnus hookeri	scaly everlastingbush	M.Wapstra	26-Mar-1996?	584562,5439983 +/- 100m.	e					
148902	Ozothamnus hookeri	scaly everlastingbush	K.Johnson	14-Mar-1996?	583262,5439783 +/- 100m.	e					
148959	Persoonia gunnii	gunn's geebung	K.Johnson	13-Mar-1996?	584512,5440583 +/- 100m.	e					
148904	Persoonia gunnii	gunn's geebung	K.Johnson	14-Mar-1996?	583262,5439783 +/- 100m.	e					

Non-threatened flora of conservation significance within 5000 m

ID	Species	Common Name	Observers	Date	Location	End	Pri	Sci	RFA	Bio	Res
148918	Persoonia muelleri var. muelleri	mueller's geebung	K.Johnson	13-Mar-1996?	584212,5440333 +/- 100m.	e					
148925	Persoonia muelleri var. muelleri	mueller's geebung	K.Johnson	13-Mar-1996?	584312,5440583 +/- 100m.	e					
148719	Persoonia muelleri var. muelleri	mueller's geebung	K.Johnson	13-Mar-1996?	584362,5440083 +/- 100m.	e					
148720	Phyllocladus aspleniifolius	celerytop pine	K.Johnson	13-Mar-1996?	584362,5440083 +/- 100m.	e					
928911	Phyllocladus aspleniifolius	celerytop pine	A.Simson	19-Nov-1877	582429,5436724 +/- 10000m.	e					
12918	Phyllocladus aspleniifolius	celerytop pine	M.Wapstra	26-Mar-1996?	584562,5439983 +/- 100m.	e					
409671	Phyllocladus aspleniifolius	celerytop pine	J.Kirkpatrick	1984	585012,5439183 +/- 100m.	e					
148806	Phyllocladus aspleniifolius	celerytop pine	K.Johnson	13-Mar-1996?	584512,5440583 +/- 100m.	e					
148926	Phyllocladus aspleniifolius	celerytop pine	K.Johnson	13-Mar-1996?	584312,5440583 +/- 100m.	e					
148886	Phyllocladus aspleniifolius	celerytop pine	K.Johnson	13-Mar-1996?	584512,5439933 +/- 100m.	e					
411868	Plantago paradoxa	hairtuft plantain	J.Kirkpatrick	1984	584412,5438783 +/- 100m.	e					
409624	Plantago paradoxa	hairtuft plantain	J.Kirkpatrick	1984	584312,5439683 +/- 100m.	e					
409612	Plantago paradoxa	hairtuft plantain	J.Kirkpatrick	1984	584512,5439883 +/- 100m.	e					
149051	Plantago paradoxa	hairtuft plantain	K.Johnson	14-Mar-1996?	583262,5439783 +/- 100m.	e					
409672	Plantago paradoxa	hairtuft plantain	J.Kirkpatrick	1984	585012,5439183 +/- 100m.	e					
148906	Plantago tasmanica	tasmanian plantain	K.Johnson	14-Mar-1996?	583262,5439783 +/- 100m.	e					
929201	Pomaderris elliptica var. diemenica	tasmanian yellow dogwood	A.Simson	01-Oct-1876	587973,5432959 +/- 2000m.	e					
149052	Ranunculus nanus	dwarf buttercup	K.Johnson	14-Mar-1996?	583262,5439783 +/- 100m.	e					
242241	Richea gunnii	bog candleheath	T.Burns	14-Jun-1959	580512,5437583 +/- 2000m.	e					
243456	Richea gunnii	bog candleheath	A.Simson		583912,5438683 +/- 20000m.	e					
929595	Richea gunnii	bog candleheath	A.Buchanan	24-Nov-2004	583869,5440409 +/- 1000m.	e					
148848	Richea gunnii	bog candleheath	K.Johnson	13-Mar-1996?	584212,5440433 +/- 100m.	e					
929465	Richea gunnii	bog candleheath	A.Simson	01-Apr-1876	581012,5434890 +/- 10000m.	e					
149017	Richea sprengelioides	rigid candleheath	K.Johnson	13-Mar-1996?	584212,5440433 +/- 100m.	e					
929169	Simpliglottis gunnii	tall bird-orchid	A.Simson	01-Oct-1876	587995,5434809 +/- 2000m.	e					
262499	Telopea truncata	tasmanian waratah	A.Simson	18-Dec-1878	579712,5436483 +/- 1000m.	e					
524474	Townsonia viridis	beech orchid	J.Kirkpatrick	Jun-1986	587612,5438383 +/- 100m.	t					

For more information about flora and fauna species, please contact the Manager, Biodiversity Conservation Branch.

Telephone: (03) 6233 6556

Email: NatureConservation.Enquiries@dpiw.tas.gov.au

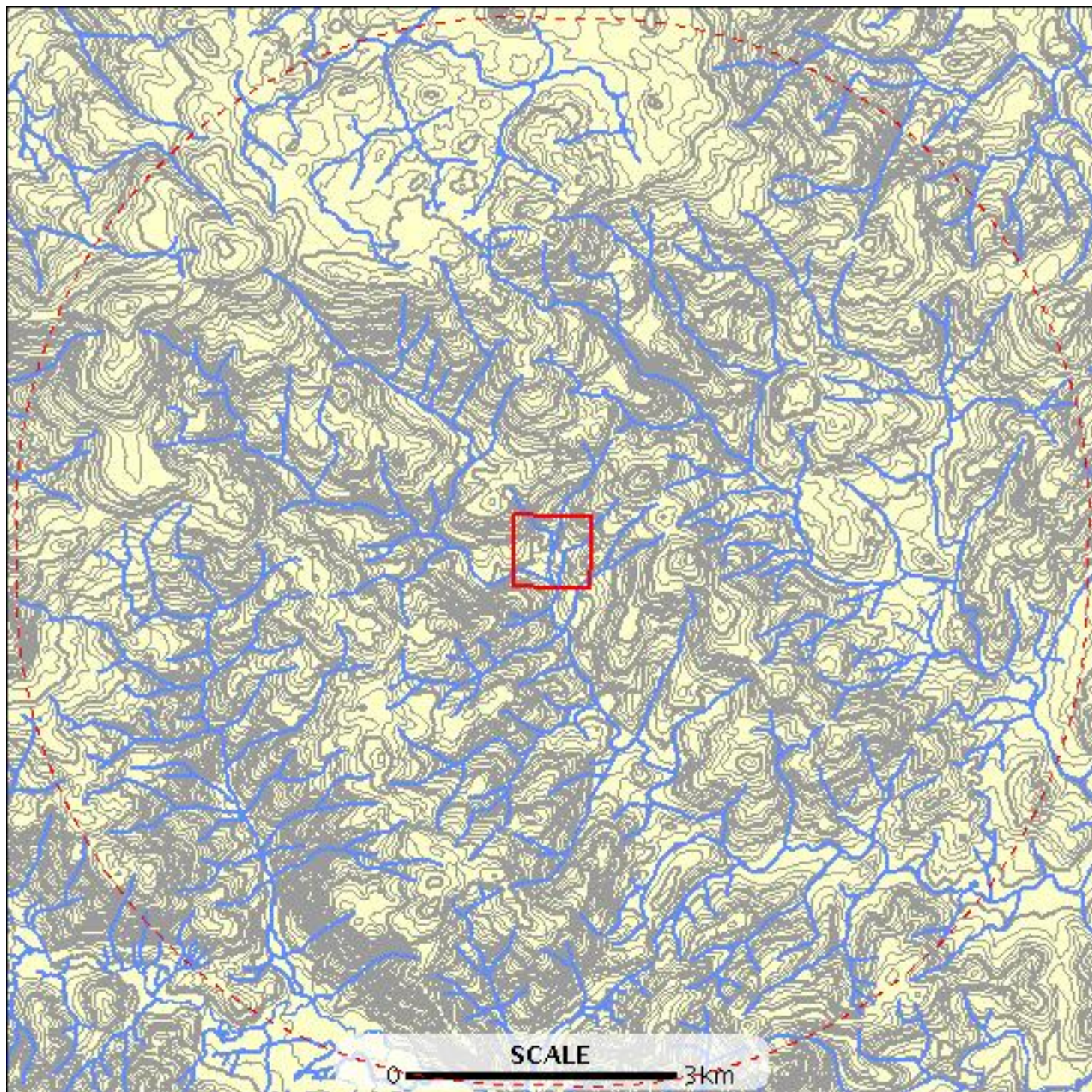
Non-threatened fauna of conservation significance within 500 m

*** No non-threatened fauna of conservation significance found within 500 metres. ***

Non-threatened fauna of conservation significance within 5000 m

E: 579454
N: 5440749

E: 590435
N: 5440749



E: 579454
N: 5429803

E: 590435
N: 5429803

Non-threatened fauna of conservation significance within 5000 m



Non-threatened fauna of conservation significance within 5000 m

ID	Species	Common Name	Observers	Date	Location	End	Pri	Sci	RFA	Bio	Res
304629	<i>Crinia tasmaniensis</i>	tasmanian froglet	D.Binns	11-Sep-1993?	584112,5438583 +/- 1000m.	e					
307195	<i>Crinia tasmaniensis</i>	tasmanian froglet	D.Binns	06-Nov-1992?	584012,5438683 +/- 1000m.	e					
749214	<i>Isoodon obesulus</i> subsp. <i>affinis</i>	southern brown bandicoot	G.Hocking	08-Sep-1986	586430,5431504 +/- 1298m.	e					
749139	<i>Isoodon obesulus</i> subsp. <i>affinis</i>	southern brown bandicoot	G.Hocking	23-May-1985	579916,5434197 +/- 642m.	e					
749217	<i>Isoodon obesulus</i> subsp. <i>affinis</i>	southern brown bandicoot	G.Hocking	11-Sep-1992	587969,5432111 +/- 1617m.	e					
749138	<i>Isoodon obesulus</i> subsp. <i>affinis</i>	southern brown bandicoot	G.Hocking	28-May-1991	579833,5434731 +/- 100m.	e					
741925	<i>Isoodon obesulus</i> subsp. <i>affinis</i>	southern brown bandicoot	G.Hocking	26-May-1986	588933,5431994 +/- 100m.	e					
741863	<i>Isoodon obesulus</i> subsp. <i>affinis</i>	southern brown bandicoot	G.Hocking	24-May-1992	580239,5432796 +/- 1242m.	e					
893443	<i>Macropus rufogriseus</i> subsp. <i>rufogriseus</i>	red-necked wallaby	D.Randal	01-Aug-1973?	588313,5438737 +/- 18500m.	e					
741870	<i>Macropus rufogriseus</i> subsp. <i>rufogriseus</i>	red-necked wallaby	G.Hocking	11-Sep-1992	581241,5432158 +/- 1617m.	e					
749218	<i>Macropus rufogriseus</i> subsp. <i>rufogriseus</i>	red-necked wallaby	G.Hocking	24-Oct-1991	588325,5432222 +/- 101m.	e					
741861	<i>Macropus rufogriseus</i> subsp. <i>rufogriseus</i>	red-necked wallaby	G.Hocking	30-Jul-1992	580113,5435894 +/- 478m.	e					
886020	<i>Tachyglossus aculeatus</i> subsp. <i>setosus</i>	short-beaked echidna	D.Binns	02-Feb-1995?	586012,5431183 +/- 100m.	e					
749215	<i>Thylogale billardieri</i>	tasmanian pademelon	G.Hocking	25-Apr-1985	586430,5431504 +/- 1174m.	eax					
998785	<i>Thylogale billardieri</i>	tasmanian pademelon	J.Jackson	23-Mar-1996	586554,5431124 +/- 500m.	eax					
749210	<i>Thylogale billardieri</i>	tasmanian pademelon	G.Hocking	25-Apr-1985	585509,5430928 +/- 1174m.	eax					
749161	<i>Thylogale billardieri</i>	tasmanian pademelon	G.Hocking	24-May-1992	580576,5432495 +/- 1242m.	eax					
749157	<i>Thylogale billardieri</i>	tasmanian pademelon	G.Hocking	28-May-1991	580013,5436061 +/- 100m.	eax					
749154	<i>Thylogale billardieri</i>	tasmanian pademelon	G.Hocking	08-Sep-1986	579980,5436155 +/- 4604m.	eax					
741922	<i>Thylogale billardieri</i>	tasmanian pademelon	G.Hocking	16-Apr-1993	588577,5432225 +/- 521m.	eax					
741886	<i>Thylogale billardieri</i>	tasmanian pademelon	G.Hocking	11-Sep-1992	581241,5432158 +/- 1617m.	eax					
741860	<i>Thylogale billardieri</i>	tasmanian pademelon	G.Hocking	30-Jul-1992	579988,5434979 +/- 198m.	eax					
741862	<i>Thylogale billardieri</i>	tasmanian pademelon	G.Hocking	26-May-1986	580113,5435894 +/- 100m.	eax					
741920	<i>Thylogale billardieri</i>	tasmanian pademelon	G.Hocking	24-Oct-1991	588325,5432222 +/- 101m.	eax					
741918	<i>Thylogale billardieri</i>	tasmanian pademelon	G.Hocking	25-Apr-1985	587337,5432045 +/- 1174m.	eax					
741866	<i>Thylogale billardieri</i>	tasmanian pademelon	G.Hocking	01-Dec-1986	580955,5432374 +/- 100m.	eax					
749158	<i>Thylogale billardieri</i>	tasmanian pademelon	G.Hocking	30-Jul-1992	580113,5435894 +/- 478m.	eax					
741921	<i>Trichosurus vulpecula</i> subsp. <i>fuliginosus</i>	common brushtail possum	G.Hocking	24-Oct-1991	588325,5432222 +/- 101m.	e					
741859	<i>Trichosurus vulpecula</i> subsp. <i>fuliginosus</i>	common brushtail possum	G.Hocking	08-Sep-1986	579980,5436155 +/- 4604m.	e					

Non-threatened fauna of conservation significance within 5000 m

ID	Species	Common Name	Observers	Date	Location	End	Pri	Sci	RFA	Bio	Res
749156	Trichosurus vulpecula subsp. fuliginosus	common brushtail possum	G.Hocking	30-Jul-1992	579988,5434979 +/- 198m.	e					
749162	Trichosurus vulpecula subsp. fuliginosus	common brushtail possum	G.Hocking	14-Jan-1993	580673,5432367 +/- 3205m.	e					
749180	Trichosurus vulpecula subsp. fuliginosus	common brushtail possum	G.Hocking	24-Oct-1992	581299,5431775 +/- 518m.	e					
749211	Trichosurus vulpecula subsp. fuliginosus	common brushtail possum	G.Hocking	25-Apr-1985	585509,5430928 +/- 1174m.	e					
749216	Trichosurus vulpecula subsp. fuliginosus	common brushtail possum	G.Hocking	18-Jan-1988	586632,5431676 +/- 1418m.	e					
749234	Trichosurus vulpecula subsp. fuliginosus	common brushtail possum	G.Hocking	25-Apr-1985	589400,5432099 +/- 1174m.	e					
749233	Trichosurus vulpecula subsp. fuliginosus	common brushtail possum	G.Hocking	16-Apr-1993	588577,5432225 +/- 521m.	e					
749152	Trichosurus vulpecula subsp. fuliginosus	common brushtail possum	G.Hocking	25-Apr-1985	579943,5434889 +/- 1233m.	e					
749159	Trichosurus vulpecula subsp. fuliginosus	common brushtail possum	G.Hocking	30-Jul-1992	580113,5435894 +/- 478m.	e					
741858	Trichosurus vulpecula subsp. fuliginosus	common brushtail possum	G.Hocking	26-May-1986	579943,5434889 +/- 6461m.	e					
741917	Trichosurus vulpecula subsp. fuliginosus	common brushtail possum	G.Hocking	26-Jan-1993	586328,5431243 +/- 305m.	e					
741887	Trichosurus vulpecula subsp. fuliginosus	common brushtail possum	G.Hocking	11-Sep-1992	581241,5432158 +/- 1617m.	e					
741865	Trichosurus vulpecula subsp. fuliginosus	common brushtail possum	G.Hocking	24-May-1992	580576,5432495 +/- 1242m.	e					
741923	Trichosurus vulpecula subsp. fuliginosus	common brushtail possum	G.Hocking	08-Sep-1986	588670,5432217 +/- 886m.	e					

For more information about flora and fauna species, please contact the Manager, Biodiversity Conservation Branch.

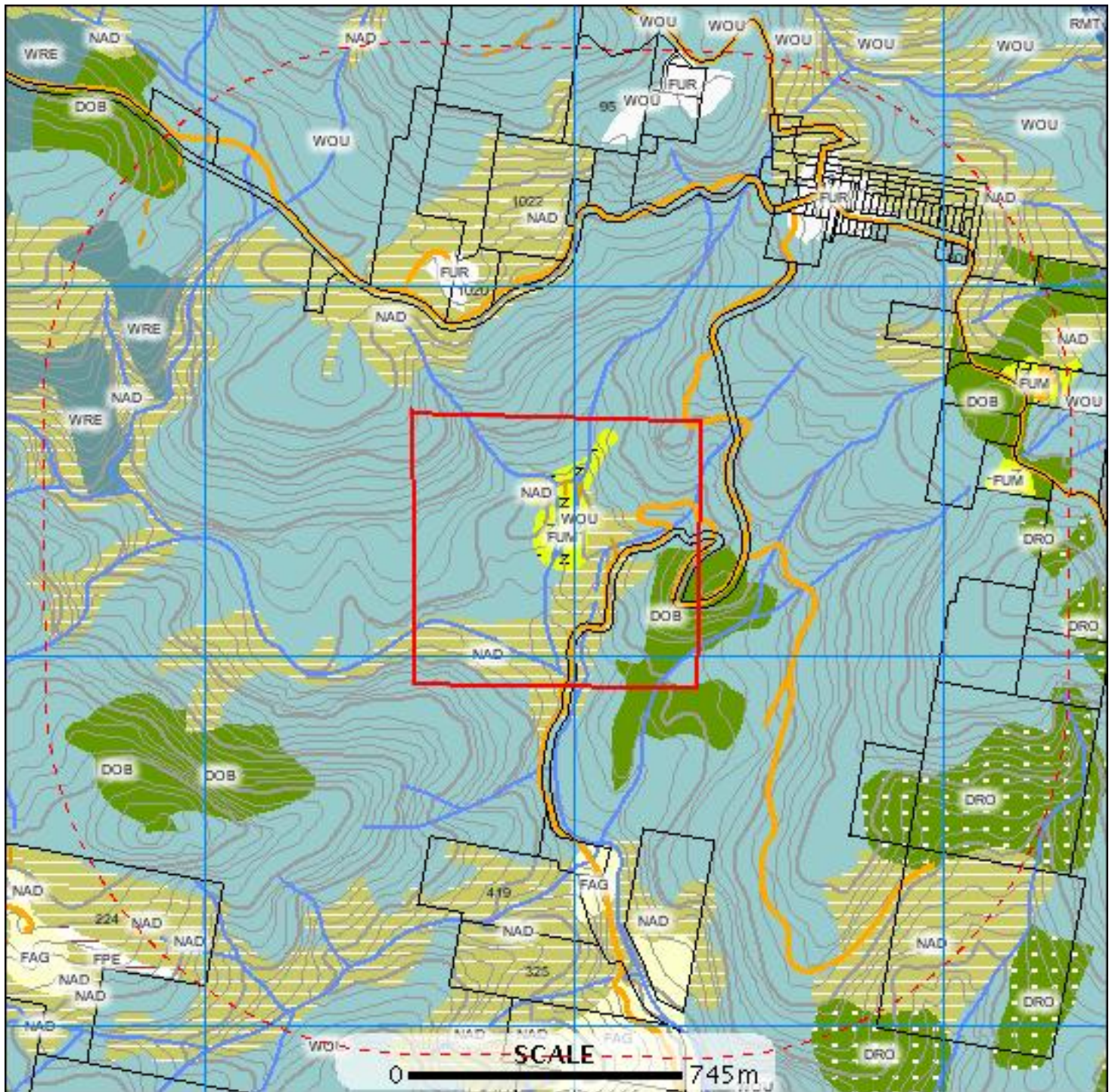
Telephone: (03) 6233 6556

Email: NatureConservation.Enquiries@dpiw.tas.gov.au

TasVeg communities within 1000 metres

E: 583454
N: 5436749

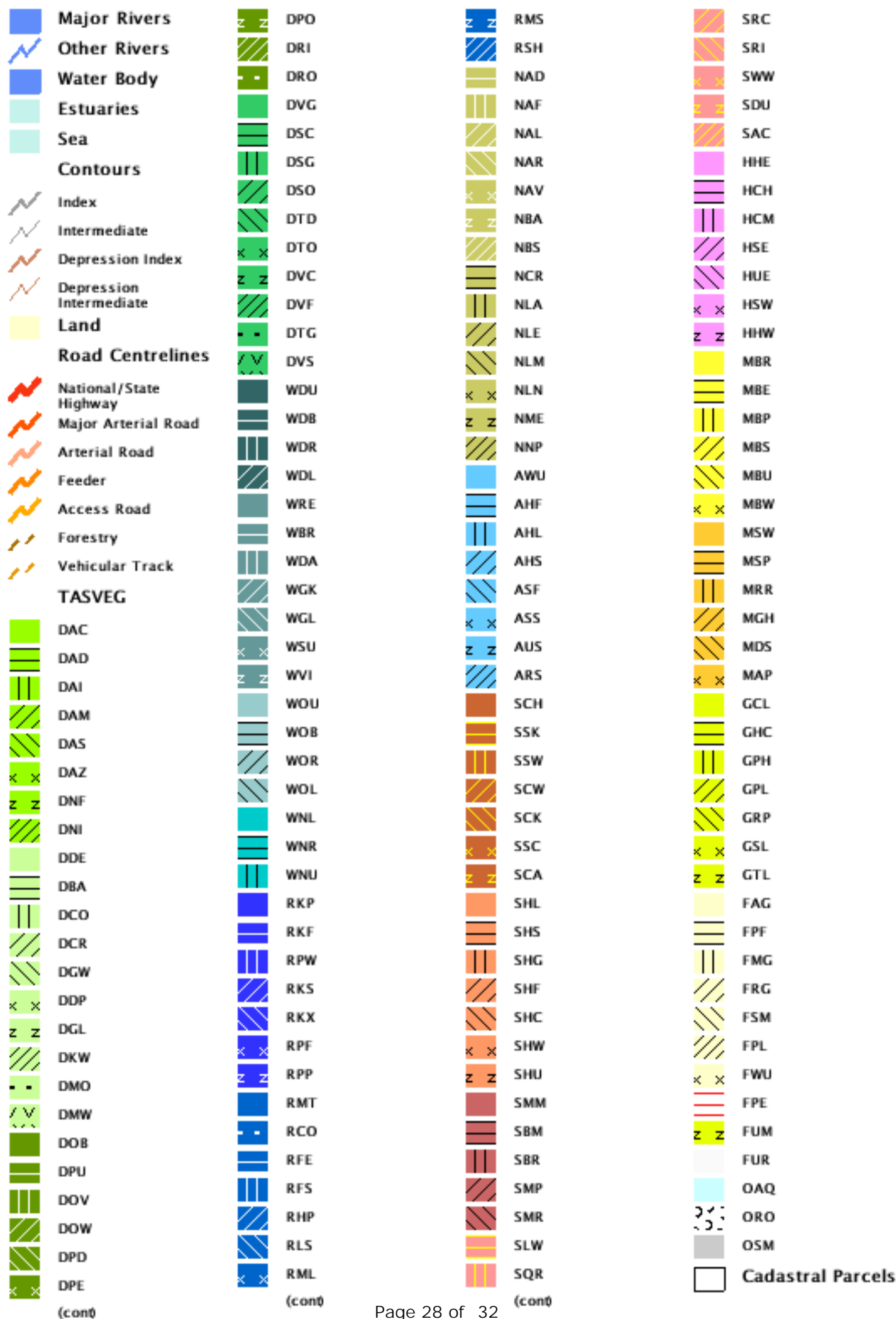
E: 586435
N: 5436749



E: 583454
N: 5433803

E: 586435
N: 5433803

TasVeg communities within 1000 metres



TasVeg communities within 1000 metres

ID	Code	Community	Emergent Species
101524224	NAD	Acacia dealbata forest	
101527591	DOB	Eucalyptus obliqua dry forest and woodland	
101527603	DOB	Eucalyptus obliqua dry forest and woodland	
101524227	FAG	Agricultural land	
101534043	FUM	Extra-urban miscellaneous	
101533525	DRO	Eucalyptus rodwayi forest and woodland	
101533529	NAD	Acacia dealbata forest	
101533607	FUR	Urban areas	
101534036	NAD	Acacia dealbata forest	
101527595	NAD	Acacia dealbata forest	
101527592	DOB	Eucalyptus obliqua dry forest and woodland	
101527355	WOU	Eucalyptus obliqua wet forest (undifferentiated)	
101533524	DRO	Eucalyptus rodwayi forest and woodland	
101524229	NAD	Acacia dealbata forest	
101524228	NAD	Acacia dealbata forest	
101527596	WRE	Eucalyptus regnans forest	
101532289	DOB	Eucalyptus obliqua dry forest and woodland	
101527365	NAD	Acacia dealbata forest	
101527562	NAD	Acacia dealbata forest	
101527608	FUR	Urban areas	
101527593	NAD	Acacia dealbata forest	
101532287	FAG	Agricultural land	
101534044	FUM	Extra-urban miscellaneous	
101534046	WOU	Eucalyptus obliqua wet forest (undifferentiated)	
101527364	NAD	Acacia dealbata forest	
101527598	NAD	Acacia dealbata forest	
101533597	DRO	Eucalyptus rodwayi forest and woodland	
101532288	NAD	Acacia dealbata forest	
101534042	DOB	Eucalyptus obliqua dry forest and woodland	
101527597	NAD	Acacia dealbata forest	
101533521	DRO	Eucalyptus rodwayi forest and woodland	
101527594	FUM	Extra-urban miscellaneous	
101533527	FUR	Urban areas	
101527564	WRE	Eucalyptus regnans forest	
101527609	WOU	Eucalyptus obliqua wet forest (undifferentiated)	
101527602	WOU	Eucalyptus obliqua wet forest (undifferentiated)	
101521346	WOU	Eucalyptus obliqua wet forest (undifferentiated)	

For more information about TASVEG maps, please contact the Coordinator, Tasmanian Vegetation Mapping Program.

Telephone: (03) 6233 4501

Email: TASVEG@dpiw.tas.gov.au

Threatened non-forest communities within 1000 metres

*** No threatened non-forest communities found within 1000 metres. ***

Geoconservation sites within 1000 metres

*** No Geoconservation sites found within 1000 metres. ***

Private reserves within 1000 metres

*** No private reserves found within 1000 metres. ***